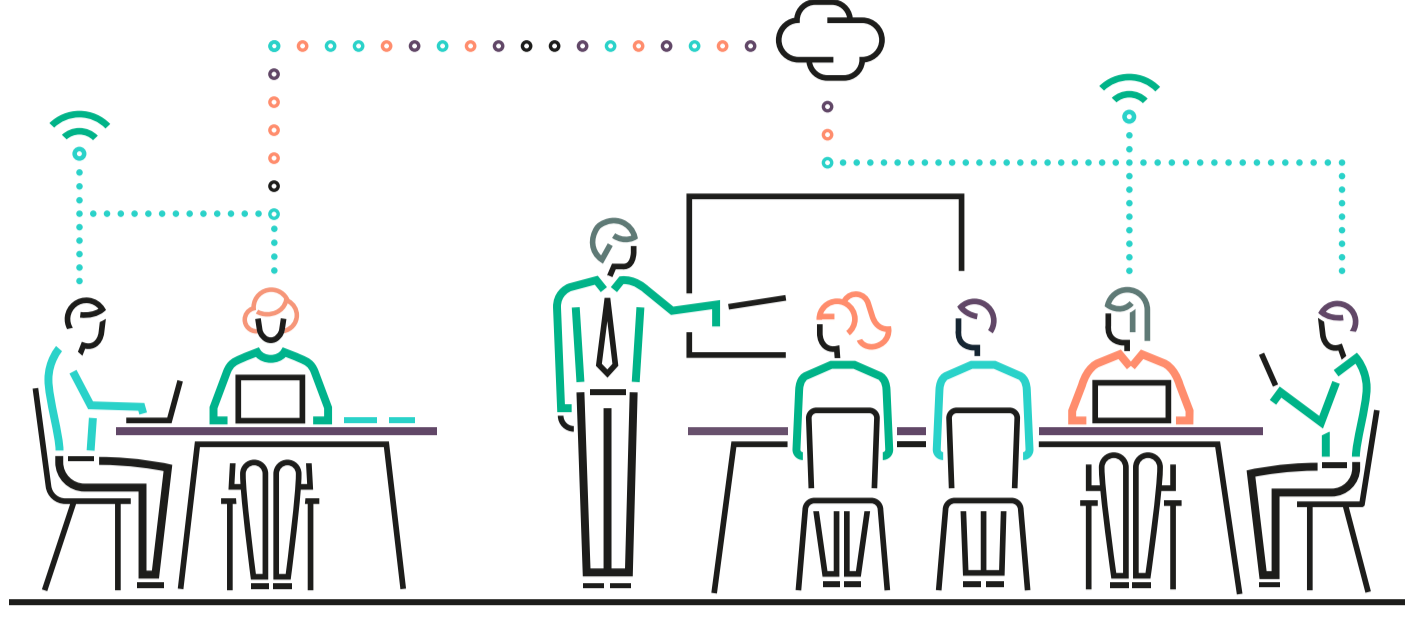


# Six successful habits of HPE partners

The HPE Partner Ready Certification and Learning program helps you accelerate your career and increase your value to customers and employers



If you do not have a HPE Partner Portal account, go to **Partner Ready portal**

**Register as a New User** and follow the steps to complete the registration form

**Contact your PPA**  
You'll need to obtain your partner company information from your Partner Portal Administrator

When you are successfully registered, you are automatically registered for the HPE Partner Ready Certification and Learning program and will be assigned an HPE Learner ID.

## 1 Explore My Learning Portal

Log into **My Learning** - Your personalized one-stop shop for skills

**My Learning Plans**  
Select your technology of choice, job role and expertise level and receive a customized learning plan

**My Certification Credentials**  
Track your HPE certifications

**My Learning Spotlight**  
View recommended learning opportunities

**My Certification Coach**  
See recommended certifications

## 2 Acquire and optimize your IT skills

**Comprehensive portfolio**  
of technology and solutions for different job roles and skills levels.

**Different learning modalities**  
Instructor-led training (ILT) across multiple locations, Virtual ILT (VILT), hands-on labs, online simulators and web-based training (WBT).

**Training Calendar**  
lists all course offerings.

## 3 Learn using HPE Press

- Technical knowledge at your fingertips
- Ideal for exam preparation and on-the-job reference
- Paperbacks, eBooks and self-directed labs
- Free eBook downloads and special offers

## 4 Explore HPE certifications

View all **HPE Certifications**

**Sales certifications**  
Show that you have the crucial skills needed to successfully build sales pipeline.

**Technical certifications**  
Validate skills from foundational to master level. Master ASE, the pinnacle of HPE certifications, is open to individuals who design the largest and most complex solutions.

**Advance through the certification levels in your chosen technology**  
Our **Career Certification Paths Quick Reference Guide** graphically shows you how.

## 5 Validate your skills and knowledge

**Advance your career**, aim for a higher salary and deliver better business results with HPE certifications

**Meet HPE Partner Ready** program requirements

**Web-based**, Proctored, Online proctored and Performance-based exams are administered by Pearson VUE. If you do not have a Pearson VUE Testing Profile, go to **Pearson VUE** to create an account.

## 6 Display your credentials

**Get recognized** as an HPE certified expert.

**Download** your personalized e-Certificates, ID cards and Level Insignias from the Benefits section in My Learning.

**Display** them on your email signature, business card and social media profile.

Learn more at [certification-learning.hpe.com](http://certification-learning.hpe.com)